



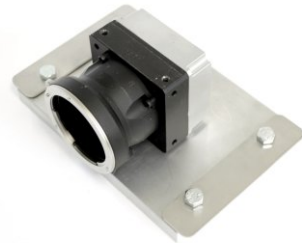
Benefits:

- For cameras up to 90 x 150mm cross section
- Robust construction
- High IP protection class
- Flexible camera positioning
- High chemical resistance
- Vibration-proof mounting
- Camera mount included
- Excellent heat dissipation
- Integration of ring lights possible
- Dome window option

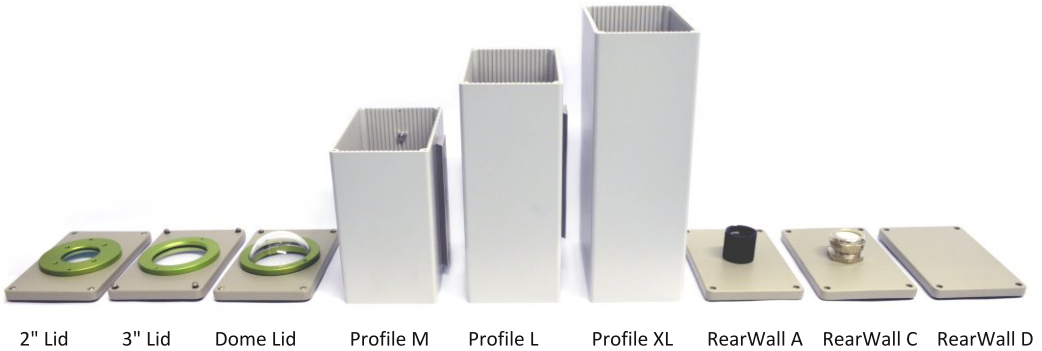


Technical Details:

Max. Camera Size (w x h)	90 x 150mm	Weight (without cable gland)	Approx. 2300g (Size M) Approx. 2650g (Size L) Approx. 2900g (Size XL)
Max. Lens Diameter	90mm (in profile) 78mm (in front lid)	Enclosure Material	Powder Coated Aluminum
Inner Length	189mm (Size M) 259mm (Size L) 309mm (Size XL)	Enclosure Seals	NBR
Enclosure Dimensions (w x h x l, without cable gland)	173 x 113 x 207mm (M) 173 x 113 x 277mm (L) 173 x 113 x 327mm (XL)	Cable Gland Aperture (max. connector size)	22mm (Rear Wall A) 26.5mm (Rear Wall C)
Window Aperture	45mm (2" window) 65mm (3" window)	Cable Diameter	Self drilling (Rear Wall C)
Standard Window	BK7, double sided ARC	Cable Gland Seal	TPE
2" IR Mirror	Order Number: 20.000.010		
2" Sapphire	Order Number: 20.000.016		
2" Germanium	Order Number: 20.000.017		
3" Germanium	Order Number: 20.000.018		
2" Acrylic, uncoated	Order Number: 20.000.027		
2" Acrylic, double sided AR	Order Number: 20.000.029		
3" Acrylic, double sided AR	Order Number: 20.000.033		
Window Seal	EPDM		
Protection Class	IP65		



The mount provides good heat dissipation



Order Numbers (please specify the camera type for each order!):

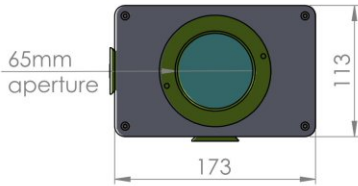
Enclosure Size	Rear Wall	Order Number	Enclosure Size	Rear Wall	Order Number
M, 3" Window	A	2X.X65.180	L, 3" Germanium Window, for e.g. Flir A600	C	2X.X68.250
	C	2X.X66.180			
	D	2X.X67.180			
L, 3" Window	A	2X.X65.250	XL, 3" Window	A	2X.X65.300
	C	2X.X66.250		C	2X.X66.300
	D	2X.X67.250		D	2X.X67.300

Accessories:

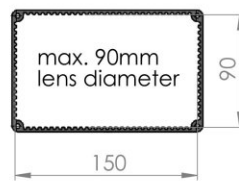
Product	Image	Order No.	Product	Image	Order No.	Product	Image	Order No.
2" Wind Curtain		50.100.010	Cooling Module		60.100.020	Mounting Kit 7		5.070.000
Tube Wind Curtain 2"		50.100.017	Corrugated Tube 28mm		20.000.006	Mounting Kit 9		5.090.000
3" Wind Curtain		50.100.011	Mounting Kit 1		5.010.000	Mounting Kit 10		5.100.000
Dome Window		20.040.015	Mounting Kit 2		5.020.000	Mounting Kit 15		5.150.000
30mm Extension		15.030.030	Mounting Kit 6		5.060.000	Mounting Kit 16		5.160.000
60mm Extension		15.030.085	M72 Front Lid		20.040.018	Mounting Kit 17		5.170.000
						Mounting Tool		90.000.004



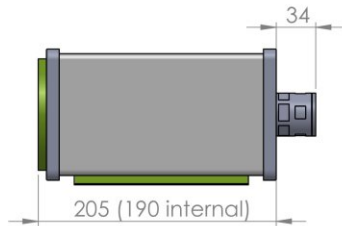
3" Front Lid



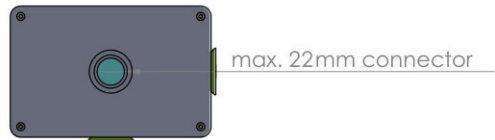
Profile



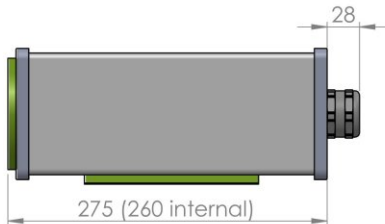
Size M



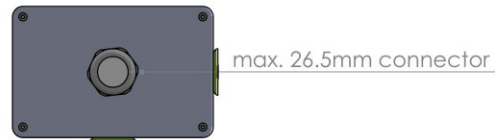
Rear Wall A



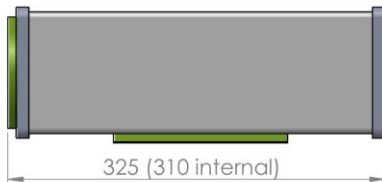
Size L



Rear Wall C



Size XL



Rear Wall D

