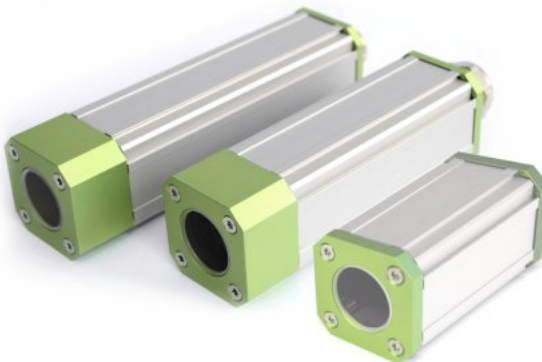




Benefits:

- For cameras up to 30 x 30mm cross section
- Robust construction
- Compact size
- Small dead weight
- High IP protection class
- Flexible camera positioning
- High chemical resistance
- Vibration-proof mounting
- Camera mount included
- Excellent heat dissipation
- Custom length



Technical Details:

Camera Size	29 x 29mm 30 x 30mm
Max. Lens Diameter	39mm
Inner Length	146mm (Size S) 122mm (Size S, flat) 176mm (Size M) 152mm (Size M, flat)
Enclosure Dimensions (w x h x l, without cable gland)	50 x 50 x 156mm (S) 50 x 50 x 132mm (S, flat) 50 x 50 x 186mm (M) 50 x 50 x 162mm (M, flat)
Window Aperture	28mm
Window Material	Borosilicate, BK7
Window Coating	Double sided AR
Window Seal	Hytrel
Protection Class	IP66 (Nema 4)

Weight (incl. camera mount)	~420g (S), 350g (S, flat) ~465g (M), 395g (M, flat)
Enclosure Material	Anodized Aluminum
Enclosure Seals	NBR
Cable Gland Aperture (max. connector size)	20mm (Rear Wall A) 16.5mm (Rear Wall B) 20.5mm (Rear Wall C)
Cable Diameter	4-6.5mm (Rear Wall B) Self drilling (Rear Wall C)
Cable Gland Seal	TPE



The camera mount guarantees excellent heat dissipation



Order Numbers:

Product ID	Camera Height	Enclosure Type	Rear Wall/Front Lid		Length
2	29 = 2.9 30 = 3.0	0	Front Lid		S: 120 M: 150
			standard	flat	
			0 Rear Wall A	5	
			1 Rear Wall B	6	
2 Rear Wall C	7				

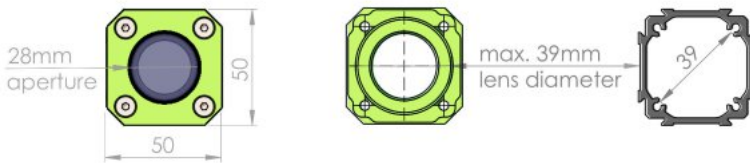
Surcharge Colibri Custom Length: **20.000.045**

Accessories:

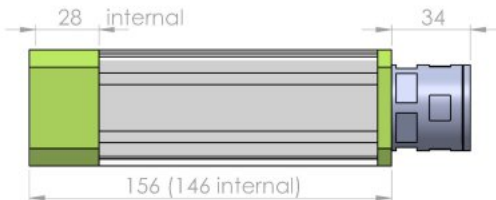
Product	Image	Order Number	Product	Image	Order Number
Colibri Air Nozzle		50.100.023	Mounting Kit 24		5.240.000
90° Deflection Mirror + Adapter required		20.020.004 + 10.062.979	Mounting Kit 26		5.260.000
30mm to 40mm Adapter Bracket		10.062.979	Mounting Kit 27		5.270.000
Corrugated Tube 28mm		20.000.006	Mounting Kit 28		5.280.000
Mounting Kit 21		5.210.000	Mounting Kit 29		5.290.000
Mounting Kit 22		5.220.000			



Front Lid



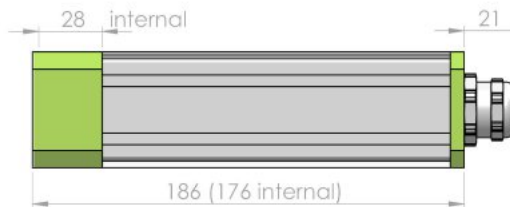
Size S



Rear Wall A



Size M

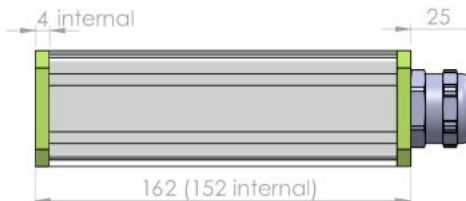


Rear Wall B



Size M

Flat Front Lid



Rear Wall C

